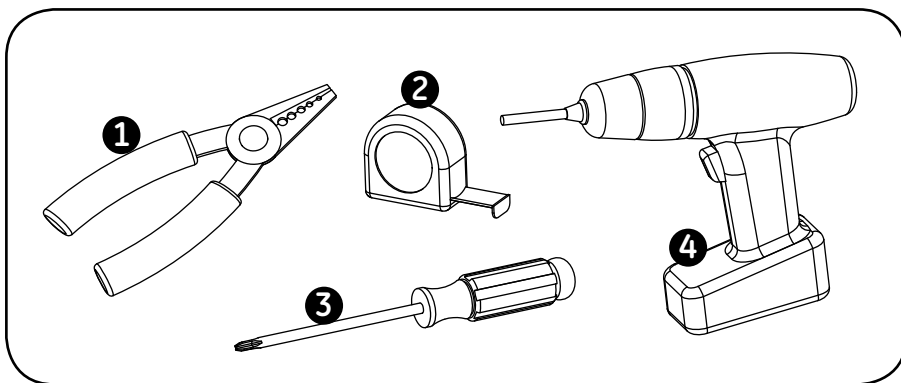


Tetra® FX Special Effects Controller

LED Lighting System

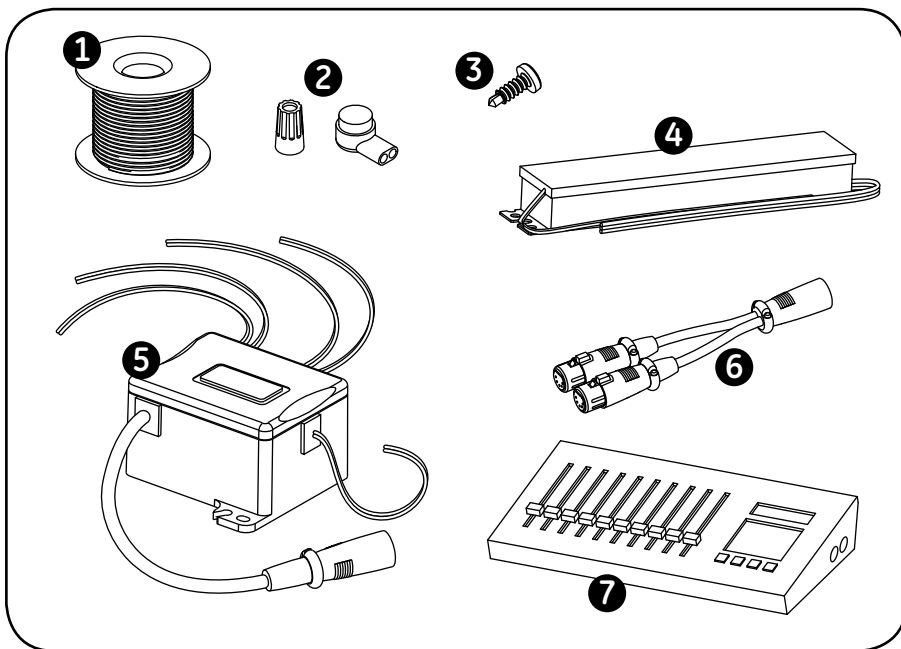
(GEFX1)

Step 1: Tools and Components Required



Tools required:

- 1 Wire stripper/cutter
- 2 Tape measure
- 3 Screwdriver
- 4 Cordless drill



Components required:

- 1 UL approved 18 AWG (0.82mm²) supply wire (9409)
- 2 UL approved 22-14 AWG twist-on wire connectors (0.33 - 2.08 mm²) or UL approved splice connectors for 18 AWG wire
- 3 #6 or #8 (M3 or M4) self drilling pan headed screws
- 4 Tetra LED Power Supply
- 5 Tetra FX Special Effects Controller (GEFX1)
- 6 Y-Splitter Cable (GEFYXS) (optional)
- 7 DMX Controller



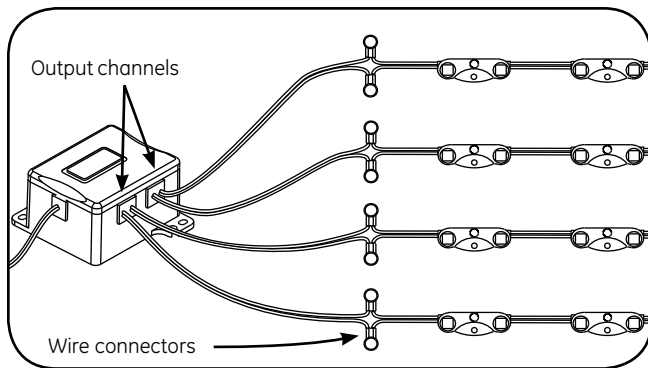
Installation Guide

Step 2: Tetra LED Strip Installation

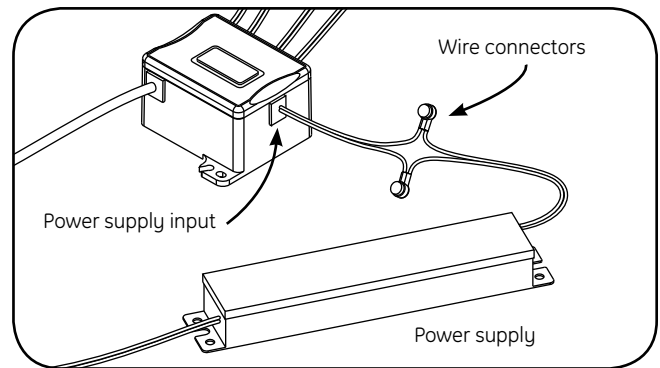
Install the Tetra LED System in your system according to the Installation Instructions that are provided with that LED system.

The Tetra FX Controller has four output banks which allows for four separately controlled sections of your Tetra LED System. The total length of LED strip that can be supported by the total FX system is limited by the maximum load supplied by the Power Supply. Refer to the Power Supply Installation Instructions for your Tetra LED System to determine the maximum loads that you can connect to a single Tetra FX Controller and power supply. If you need to achieve a length of LED strip longer than the maximum listed, the additional length will need to be connected to a separate Tetra FX Controller and power supply.

Step 3: Tetra FX Connection



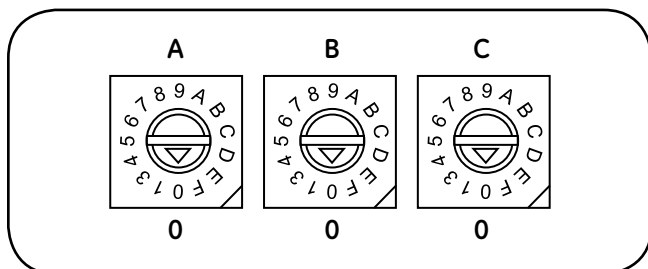
1 Attach the Tetra LED System to the wires marked "Output Channels" on the Tetra FX Controller using the appropriate wire connectors.



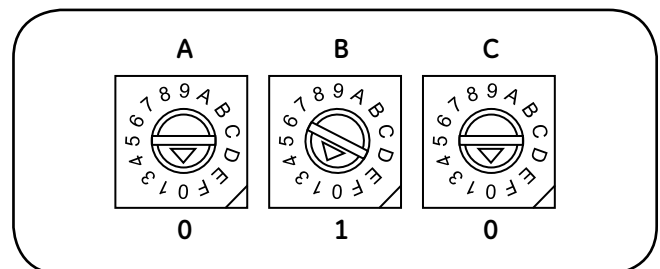
2 Attach the correct power supply output wire to the wire marked "Power Supply Input" on the Tetra FX Controller using the appropriate wire connectors.

Step 4: Set Address Selector

Set the address of the four outputs using the selector dials on the front of the Tetra FX Controller. The address can be set in groups of four ranging from 0 to 512. Refer to the chart on the next page of this document for a complete list of address selector settings.

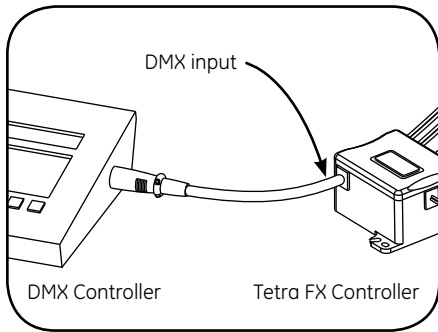


NOTE: When all selector dials set on the default position of 0 (as shown), the corresponding addresses of the output channels are 1, 2, 3 and 4.

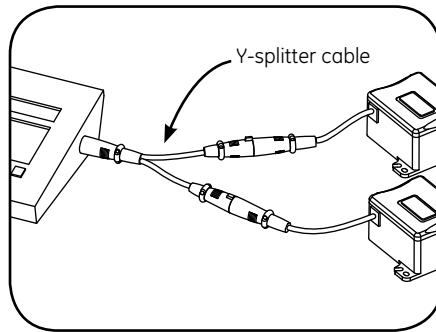


EXAMPLE: To set the outputs to address 17, 18, 19, and 20, set Dial A to 0, Dial B to 1 and Dial C to 0.

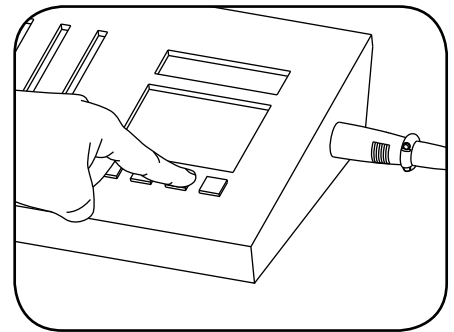
Step 5: Connection to DMX Controller



1 Connect the Tetra FX Controller with attached LED strips and power supply to your DMX Controller using the wire marked "DMX Input."



2 If required, use Y-splitter cable(s) (GEFYXS) to connect multiple Tetra FX Controllers.



3 Set your DMX Controller to match the address selected on the front of the Tetra FX Controller and program the desired special effects.

Address Selector Chart

The chart below outlines the settings you can select for the address selector dials.

Output Address	Selector Dial A	Selector Dial B	Selector Dial C	Output Address	Selector Dial A	Selector Dial B	Selector Dial C	Output Address	Selector Dial A	Selector Dial B	Selector Dial C	Output Address	Selector Dial A	Selector Dial B	Selector Dial C	Output Address	Selector Dial A	Selector Dial B	Selector Dial C
1-4	0	0	0	105-108	0	6	8	209-212	0	D	0	313-316	1	3	8	417-420	1	A	0
5-8	0	0	4	109-112	0	6	C	213-216	0	D	4	317-320	1	3	C	421-424	1	A	4
9-12	0	0	8	113-116	0	7	0	217-220	0	D	8	321-324	1	4	0	425-428	1	A	8
13-16	0	0	C	117-120	0	7	4	221-224	0	D	C	325-328	1	4	4	429-432	1	A	C
17-20	0	1	0	121-124	0	7	8	225-228	0	E	0	329-332	1	4	8	433-436	1	B	0
21-24	0	1	4	125-128	0	7	C	229-232	0	E	4	333-336	1	4	C	437-440	1	B	4
25-28	0	1	8	129-132	0	8	0	233-236	0	E	8	337-340	1	5	0	441-444	1	B	8
29-32	0	1	C	133-136	0	8	4	237-240	0	E	C	341-344	1	5	4	445-448	1	B	C
33-36	0	2	0	137-140	0	8	8	241-244	0	F	0	345-348	1	5	8	449-452	1	C	0
37-40	0	2	4	141-144	0	8	C	245-248	0	F	4	349-352	1	5	C	453-456	1	C	4
41-44	0	2	8	145-148	0	9	0	249-252	0	F	8	353-356	1	6	0	457-460	1	C	8
45-48	0	2	C	149-152	0	9	4	253-256	0	F	C	357-360	1	6	4	461-464	1	C	C
49-52	0	3	0	153-156	0	9	8	257-260	1	0	0	361-364	1	6	8	465-468	1	D	0
53-56	0	3	4	157-160	0	9	C	261-264	1	0	4	365-368	1	6	C	469-472	1	D	4
57-60	0	3	8	161-164	0	A	0	265-268	1	0	8	369-372	1	7	0	473-476	1	D	8
61-64	0	3	C	165-168	0	A	4	269-272	1	0	C	373-376	1	7	4	477-480	1	D	C
65-68	0	4	0	169-172	0	A	8	273-276	1	1	0	377-380	1	7	8	481-484	1	E	0
69-72	0	4	4	173-176	0	A	C	277-280	1	1	5	381-384	1	7	C	485-488	1	E	4
73-76	0	4	8	177-180	0	B	0	281-284	1	1	9	385-388	1	8	0	489-492	1	E	8
77-80	0	4	C	181-184	0	B	4	285-288	1	1	D	389-392	1	8	4	493-496	1	E	C
81-84	0	5	0	185-188	0	B	8	289-292	1	2	1	393-396	1	8	8	497-500	1	F	0
85-88	0	5	4	189-192	0	B	C	293-296	1	2	4	397-400	1	8	C	501-504	1	F	4
89-92	0	5	8	193-196	0	C	0	297-300	1	2	8	401-404	1	9	0	505-508	1	F	8
93-96	0	5	C	197-200	0	C	4	301-304	1	2	C	405-408	1	9	4	509-512	1	F	C
97-100	0	6	0	201-204	0	C	8	305-308	1	3	0	409-412	1	9	8				
101-104	0	6	4	205-208	0	C	C	309-312	1	3	4	413-416	1	9	C				

⚠ WARNING!

RISK OF ELECTRIC SHOCK:

- Turn power OFF before inspection, installation or removal.
- Properly ground Tetra Power Supply enclosure.
- Shut off power at fuse box or circuit breaker before installation.



RISK OF FIRE:

- Follow all NEC and local codes.
- Use only approved wire for input connection.
Minimum size 1.02mm

Conforms to the following standards:



GE Lighting Solutions • 1-888-MY-GE-LED • www.gelightingsolutions.com
1 - 8 8 8 - 6 9 - 4 3 - 5 3 3

GE Lighting Solutions is a subsidiary of the General Electric Company. Tetra is a trademark of GE Lighting Solutions. The GE brand and logo are trademarks of the General Electric Company.
© 2011 GE Lighting Solutions. Information provided is subject to change without notice. All values are design or typical values when measured under laboratory conditions.