

GE
Lighting Solutions

2011 Product Reference Guide

LED Lighting Systems



imagination at work

Tetra® LED Systems

Tetra® miniMAX



Tetra miniMAX delivers brilliant light in channel letters as shallow as 38 mm. The patent-pending OptiLens™ promotes a wide viewing angle and superior uniformity in the smallest of channel letters.

Applications — small channel letters

Available Colors — red, green, blue, white & warm white

Packaging — 30.46 m/box

Tetra® MAX



Tetra MAX is designed for the easiest possible installation and operation. This LED system is available in a wide selection of colors and provides bright uniform light in medium sized channel letters.

Applications — medium channel letters

Available Colors — red, red-orange, amber, green, blue, white & warm white

Packaging — 30.46 m/box

Tetra® PowerMAX



Tetra PowerMAX provides powerful white light in the largest channel letter applications. OptiLens™ allows this lighting system to produce wide uniform surface area coverage across the sign face.

Applications — large channel letters

Available Colors — white & warm white

Packaging — 30.46 m/box

Tetra® PowerStrip & PowerStrip DS



Tetra PowerStrip significantly reduces maintenance and energy costs by replacing fluorescent lighting in box and pylon signs. This LED system features OptiLens™, a patent-pending optical lens that eliminates striping commonly associated with fluorescent lighting.

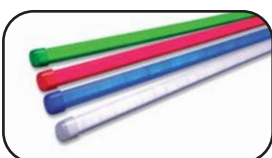
Applications — box signs

Available Colors — white & warm white

Packaging — Tetra PowerStrip: 48 modules per box

Tetra PowerStrip DS: 32 modules per box

Tetra® Contour LS



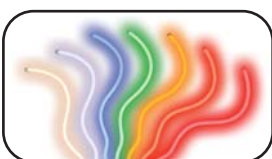
Tetra Contour LS is our linear neon replacement system that comes pre-assembled and ready-to-install; perfect for long run border lighting applications.

Applications — border lighting and accent lighting

Available Colors — red, green, blue & white

Packaging — 14.63 m/box

Tetra® Contour



Tetra Contour is our two-part neon replacement system that can be easily heated and formed into custom shapes and designs.

Applications — neon replacement and accent lighting

Available Colors — Light Engine: red, red-orange, amber, green, blue, white & warm white

Light Guide: red, orange, yellow, lime green, green, blue & white

Packaging — Tetra Contour light engines: red: 29.26 m/box; other colors: 14.63 m/box

Tetra Contour light guides: 29.26 m/box

Tetra® Product Reference Guide

PRODUCT LINE	TARGET APPLICATION	APPLICATION DIMENSIONS	SKU	LED COLOR	WAVELENGTH/ COLOR TEMPERATURE
Tetra miniMAX	Small Channel Letters	19 mm Min. Stroke Width 38 mm Min. Depth	GERDMMS5	Red	625 nm
			GEGLMMS5	Green	530 nm
			GEBLMMS5	Blue	467 nm
			GEWHMMS6	White	6500K
			GEWWMMS6	Warm White	3200K
Tetra MAX	Medium Channel Letters	19 mm Min. Stroke Width 102 mm Min. Depth	GERDMXWA5	Red	625 nm
			GERCMXWA6	Red-Orange	618 nm
			GEYGMXS6	Amber	592 nm
			GEGLMXWA5	Green	530 nm
			GEBLMXWA5	Blue	467 nm
			GEWHMXWA5	White	6500K
			GEWWMXWA5	Warm White	3200K
			GERDMXWL6	Red	625 nm
			GERCMXWL6	Red-Orange	618 nm
			Tetra PowerMAX	Large Channel Letters	32 mm Min. Stroke Width 102 mm Min. Depth
GEWWPMS2-30K	Warm White	3000K			
Tetra PowerStrip	Single-Sided Box Signs	127 mm Min. Depth	GEWHSP3-65K	White	6500K
			GEWSSP3-41K	Warm White	4100K
Tetra PowerStrip DS	Double-Sided Box Signs	254 mm Min. Depth	GEWHDSP6-65K	White	6500K
			GEWWDSP6-41K	Warm White	4100K
Tetra Contour LS	Straight Border Lighting	15mm neon replacement	GERDXNLA2-RD	Red	625 nm
			GEGLXNLA2-GL	Green	532 nm
			GEBLXNLA2-BL	Blue	467 nm
			GEWHXNLA2-WH	White	6500K
			GERDXNAA2-RD	Red	625 nm
			GEGLXNAA2-GL	Green	532 nm
			GEBLXNAA2-BL	Blue	467 nm
			GEWHXNAA2-WH	White	6500K
Tetra Contour*	Border & Accent Lighting	15mm neon replacement	GERDXNLE1	Red	625 nm
			GERCXNLE1	Red-Orange	618 nm
			GEYAXNLE1	Amber	589 nm
			GEGLXNLE1	Green	532 nm
			GEBLXNLE1	Blue	467 nm
			GEWHXNLE1	White	6500K
			GEWXXNLE1	Warm White	3200K

* Measurements taken in white light guides (GEXNLG15). For a complete list of light

**Tetra Contour power consumption is measured by the foot

LEDs PER MODULE	MODULES PER METER	VIEWING ANGLE	LUMENS PER MODULE (Typical)	LUMENS PER METER (Typical)	LIMITED WARRANTY	LED STRIP (Typical) POWER CONSUMPTION WATTS/MODULE**	LED SYSTEM (Typical) POWER CONSUMPTION WATTS/MODULE**
2	~8	155	10	84	5 year	0.62	0.75
2	~8	155	24	195	5 year	0.62	0.75
2	~8	155	7	56	5 year	0.62	0.75
2	~10	150	25	242	5 year	0.43	0.52
2	~10	150	18	180	5 year	0.43	0.52
2	~8	150	9	77	5 year	0.41	0.48
2	~10	150	6	59	5 year	0.33	0.40
2	~10	100	7	70	5 year	0.33	0.40
2	~8	150	19	158	5 year	0.41	0.48
2	~8	150	7	53	5 year	0.41	0.48
2	~8	150	24	196	5 year	0.41	0.48
2	~8	150	19	155	5 year	0.41	0.48
3	~7	150	14	90	5 year	0.41	0.49
3	~7	150	9	59	5 year	0.33	0.40
1	~7	125	73	479	5 year	0.96	1.16
1	~7	125	50	328	5 year	0.96	1.16
3	~3	135 Horz., 140 Vert.	249	817	5 year	3.13	3.58
3	~3	135 Horz., 140 Vert.	201	659	5 year	3.13	3.58
6	~3	135 Horz., 140 Vert.	498	1634	5 year	6.24	7.14
6	~3	135 Horz., 140 Vert.	402	1319	5 year	6.24	7.14
		330		154	5 year	3.24	3.81
		330		180	5 year	2.88	3.39
		330		62	5 year	2.88	3.39
		330		243	5 year	2.88	3.39
		330		154	5 year	3.24	3.81
		330		180	5 year	2.88	3.39
		330		62	5 year	2.88	3.39
		330		243	5 year	2.88	3.39
		330		131	5 year	3.24	3.81
		330		105	5 year	3.24	3.81
		330		98	5 year	3.24	3.81
		330		262	5 year	2.88	3.39
		330		66	5 year	2.88	3.39
		330		207	5 year	2.88	3.39
		330		243	5 year	2.88	3.39

guides and accessories, reference the Tetra Contour Component Guide.

Power Supplies & Components

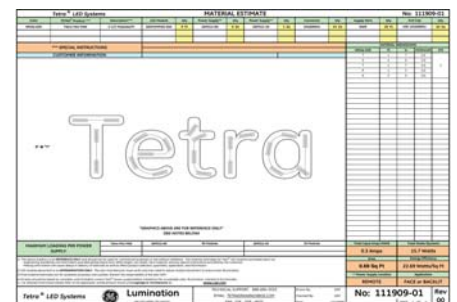
MODULE DIMENSIONS H x W x L (mm)	CUT RESOLUTION	POWER SUPPLY	SUPPLY WIRE	WIRE CONNECTOR	END CAP
9 x 12 x 46	Between every module	12VDC Power Supplies	9409 (0.82 mm ²)	IDC Connector (192160005) or Twist-on Connector (191600041)	N/A
9 x 12 x 46	Between every module				
9 x 12 x 46	Between every module				
9 x 12 x 46	Between every module				
9 x 12 x 46	Between every module				
14 x 17 x 52	Between every module	12VDC Power Supplies	9409 (0.82 mm ²)	IDC Connector (192160004) or Twist-on Connector (191600041)	GETMEC1
14 x 17 x 52	Between every module				
14 x 17 x 52	Between every module				
14 x 17 x 52	Between every module				
14 x 17 x 52	Between every module				
14 x 17 x 52	Between every module				
14 x 17 x 52	Between every module				
14 x 17 x 52	Between every module				
14 x 17 x 86	Between every module	12VDC Power Supplies	9409 (0.82 mm ²)	IDC Connector (192160004) or Twist-on Connector (191600041)	GETMEC1
14 x 17 x 86	Between every module				
10 x 23 x 47	Between every module	12VDC Power Supplies	9409 (0.82 mm ²)	IDC Connector (192160004) or Twist-on Connector (191600041)	GETMEC1
10 x 23 x 47	Between every module				
12 x 38 x 242	Between every module	12VDC Power Supplies 24VDC Power Supplies	9409 (0.82 mm ²)	IDC Connector (192160004) or Twist-on Connector (191600041)	GETMEC1
12 x 38 x 242	Between every module				
12 x 38 x 242	Between every module				
12 x 38 x 242	Between every module				
10 x 10 x 203	Cut between modules (203 mm)	24VDC Power Supplies	9409 (0.82 mm ²)	Twist-on Connector (191600041)	N/A
10 x 10 x 203	Cut between modules (203 mm)				
10 x 10 x 203	Cut between modules (203 mm)				
10 x 10 x 203	Cut between modules (203 mm)				
10 x 10 x 406	On "Cut Here" markings (68 mm)				
10 x 10 x 406	On "Cut Here" markings (51 mm)				
10 x 10 x 406	On "Cut Here" markings (51 mm)				
10 x 10 x 406	On "Cut Here" markings (51 mm)	24VDC Power Supplies	9409 (0.82 mm ²)	Twist-on Connector (191600041)	N/A
10 x 10 x 406	On "Cut Here" markings (68 mm)				
10 x 10 x 406	On "Cut Here" markings (68 mm)				
10 x 10 x 406	On "Cut Here" markings (68 mm)				
10 x 10 x 406	On "Cut Here" markings (51 mm)				
10 x 10 x 406	On "Cut Here" markings (51 mm)				
10 x 10 x 406	On "Cut Here" markings (51 mm)				

Tetra® Power Supplies

SKU	Description	Supports Tetra Products	SKUS	Minimum Load	Maximum Load	Maximum Remote Mounting Distance			
						0.82 mm²	1.31 mm²	2.08 mm²	3.31 mm²
GEPS12-20	12VDC/20W; Input Voltage: 90-264VAC; Damp Rated; Self-Contained, Remote or Raceway; 1 Output Bank; Class 2	Tetra miniMAX	GEWHMMS5, GEWWMMS5, GERDMMS5, GEGLMMS5, GEBLMMS5	0.30 m (3 Modules)	3.66 m (30 Modules)	36.6 m	-	-	-
		Tetra miniMAX	GEWHMMS6, GEWWMMS6	0.30 m (3 Modules)	3.96 m (39 Modules)	36.6 m	-	-	-
		Tetra MAX	GERCMXWA6, GEYGMXS6	0.30 m (3 Modules)	5.18 m (51 Modules)	36.6 m	-	-	-
		Tetra MAX	GERCMXWL6	0.30 m (2 Modules)	7.92 m (52 Modules)	36.6 m	-	-	-
		Tetra MAX	GERDMXWL6	0.30 m (2 Modules)	7.01 m (46 modules)	36.6 m	-	-	-
		Tetra MAX	GEWHMXWA5, GEWWMXWA5, GERDMXWA5, GEGLMXWA5, GEBLMXWA5	0.30 m (2 Modules)	5.18 m (42 Modules)	36.6 m	-	-	-
		Tetra PowerMAX	GEWHPMS2-65K, GEWWPMS2-30K	0.30 m (2 Modules)	3.05 m (20 Modules)	36.6 m	-	-	-
Tetra PowerStrip	GEWHSSP3-65K, GEWWSSP3-41K	0.30 m (1 Module)	1.52 m (5 Modules)	36.6 m	-	-	-		
GEPS12-60	12VDC/60W; Input Voltage: 90-264VAC; Damp Rated; Self-Contained, Remote or Raceway; 1 Output Bank; Class 2	Tetra miniMAX	GEWHMMS5, GEWWMMS5, GERDMMS5, GEGLMMS5, GEBLMMS5	0.30 m (3 Modules)	10.97 m (90 Modules)	9.1 m	15.2 m	24.4 m	36.6 m
		Tetra miniMAX	GEWHMMS6, GEWWMMS6	0.30 m (3 Modules)	12.1 m (120 Modules)	9.1 m	15.2 m	24.4 m	36.6 m
GEPS12-60U	12VDC/60W; Input Voltage: 108-305VAC; Damp Rated; Self-Contained, Remote or Raceway; 1 Output Bank; Class 2	Tetra MAX	GERCMXWA6, GEYGMXS6	0.30 m (3 Modules)	16.46 m (162 Modules)	9.1 m	15.2 m	24.4 m	36.6 m
		Tetra MAX	GERCMXWL6	0.30 m (2 Modules)	24.4 m (160 Modules)	9.1 m	15.2 m	24.4 m	36.6 m
		Tetra MAX	GERDMXWL6	0.30 m (2 Modules)	21.34 m (140 modules)	9.1 m	15.2 m	24.4 m	36.6 m
GEPS12W-60	12VDC/60W; Input Voltage: 90-264VAC; Wet Location Rated; 1 Output Bank; Class 2	Tetra MAX	GEWHMXWA5, GEWWMXWA5, GERDMXWA5, GEGLMXWA5, GEBLMXWA5	0.30 m (2 Modules)	16.46 m (135 Modules)	9.1 m	15.2 m	24.4 m	36.6 m
		Tetra PowerMAX	GEWHPMS2-65K, GEWWPMS2-30K	0.30 m (2 Modules)	7.62 m (50 Modules)	4.5 m	6.1 m	9.1 m	18.2 m
		Tetra PowerStrip	GEWHSSP3-65K, GEWWSSP3-41K	0.30 m (1 Module)	4.88 m (16 Modules)	6.1 m	7.6 m	10.6 m	12.1 m
GEPS24-20	24VDC/20W; Input Voltage: 90-264VAC; Damp Rated; Self-Contained, Remote or Raceway; 1 Output Bank; Class 2	Tetra PowerStrip DS		0.30 m (1 module)	0.91 m (3 modules)	36.6 m	-	-	-
		Tetra Contour		0.40 m	1.83 m	36.6 m	-	-	-
		Tetra Contour LS		0.20 m	1.83 m	36.6 m	-	-	-
GEPS24-80	24VDC/80W; Input Voltage: 90-264VAC; Damp Rated; Self-Contained, Remote or Raceway; 1 Output Bank; Class 2	Tetra PowerStrip DS		0.30 m (1 module)	3.66 m (12 Modules)	6.1 m	7.6 m	10.6 m	12.1 m
		Tetra Contour		0.40 m	7.32 m	9.1 m	15.2 m	24.4 m	36.6 m
		Tetra Contour LS		0.20 m	7.32 m	9.1 m	15.2 m	24.4 m	36.6 m
GEPS24W-80	24VDC/80W; Input Voltage: 90-264VAC; Wet Location Rated; 1 Output Bank; Class 2								
GEPS24-100U	24VDC/100W; Input Voltage: 108-305VAC; Damp Rated; Self-Contained, Remote or Raceway; 1 Output Bank; Class 2	Tetra PowerStrip DS		0.30 m (1 module)	4.88 m (16 Modules)	6.1 m	7.6 m	10.6 m	12.1 m
		Tetra Contour		0.40 m	9.1 m	9.1 m	15.2 m	24.4 m	36.6 m
		Tetra Contour LS		0.20 m	9.1 m	9.1 m	15.2 m	24.4 m	36.6 m
GEPS24-180U	24VDC/180W; Input Voltage: 90-305VAC; Damp Rated; Self-Contained, Remote or Raceway; 2 Output Banks; Class 2	Tetra PowerStrip DS		0.30 m (1 module)	14 modules/bank; 28 modules/system	6.1 m	7.6 m	10.6 m	12.1 m
		Tetra Contour		0.40 m	8.23 m/bank; 16.46 m/system	9.1 m	15.2 m	24.4 m	36.6 m
		Tetra Contour LS		0.20 m	8.23 m/bank; 16.46 m/system	9.1 m	15.2 m	24.4 m	36.6 m

Technical Support

Our comprehensive in-house resources include installer training, technical drawings, energy calculation tools and private testing labs to ensure every product we sell meets stringent standards of excellence you can depend on. For more information visit us at www.gelightingsolutions.com or call us at 1-888-MY-GE-LED.



GE Lighting Solutions • 1-888-MY-GE-LED • www.gelightingsolutions.com
1-888-69-43-533

GE Lighting Solutions, LLC is a subsidiary of the General Electric Company. Immersion is a trademark of GE Lighting Solutions, LLC. The GE brand and logo are trademarks of the General Electric Company. © 2011 GE Lighting Solutions, LLC. Information provided is subject to change without notice. All values are design or typical values when measured under laboratory conditions.